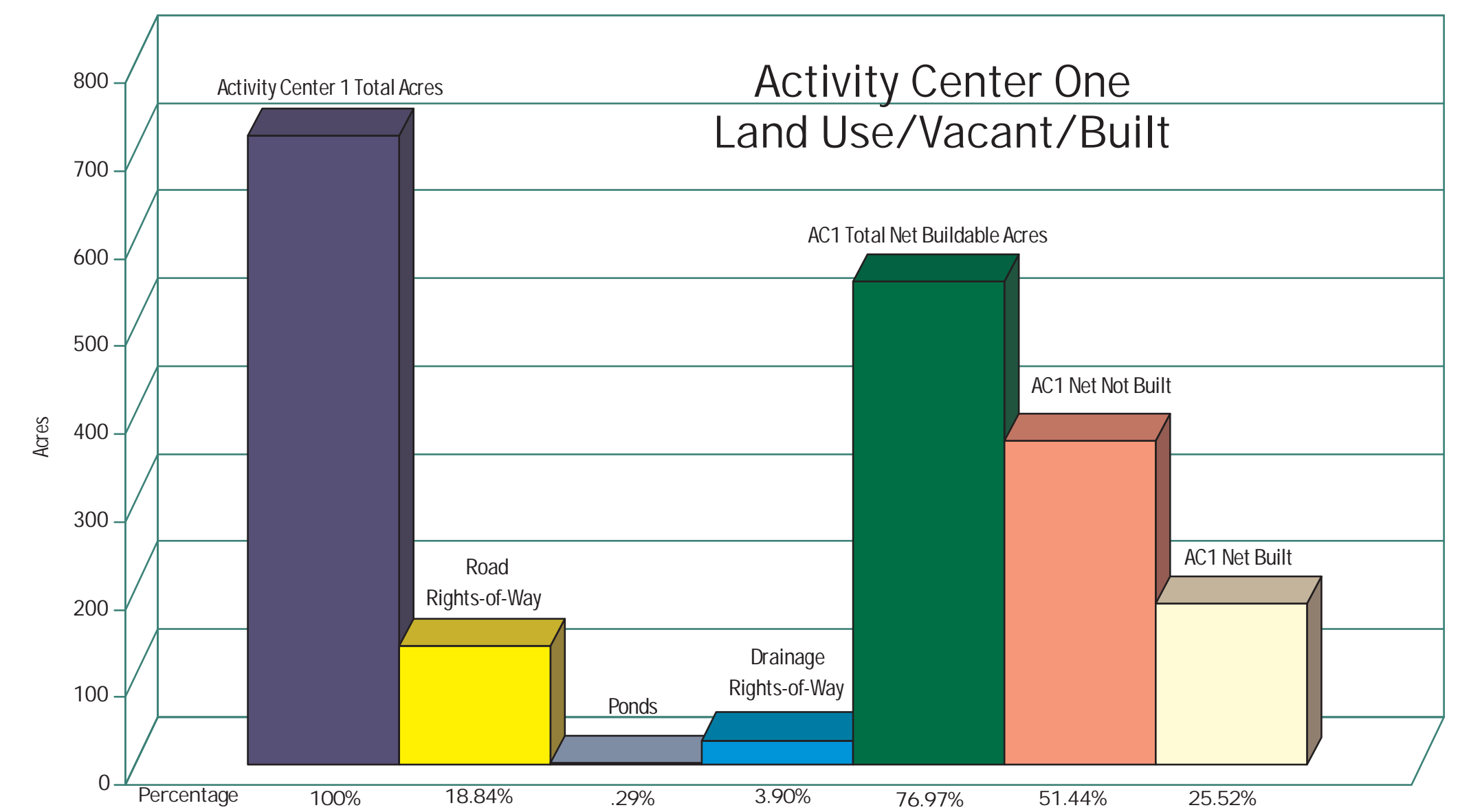
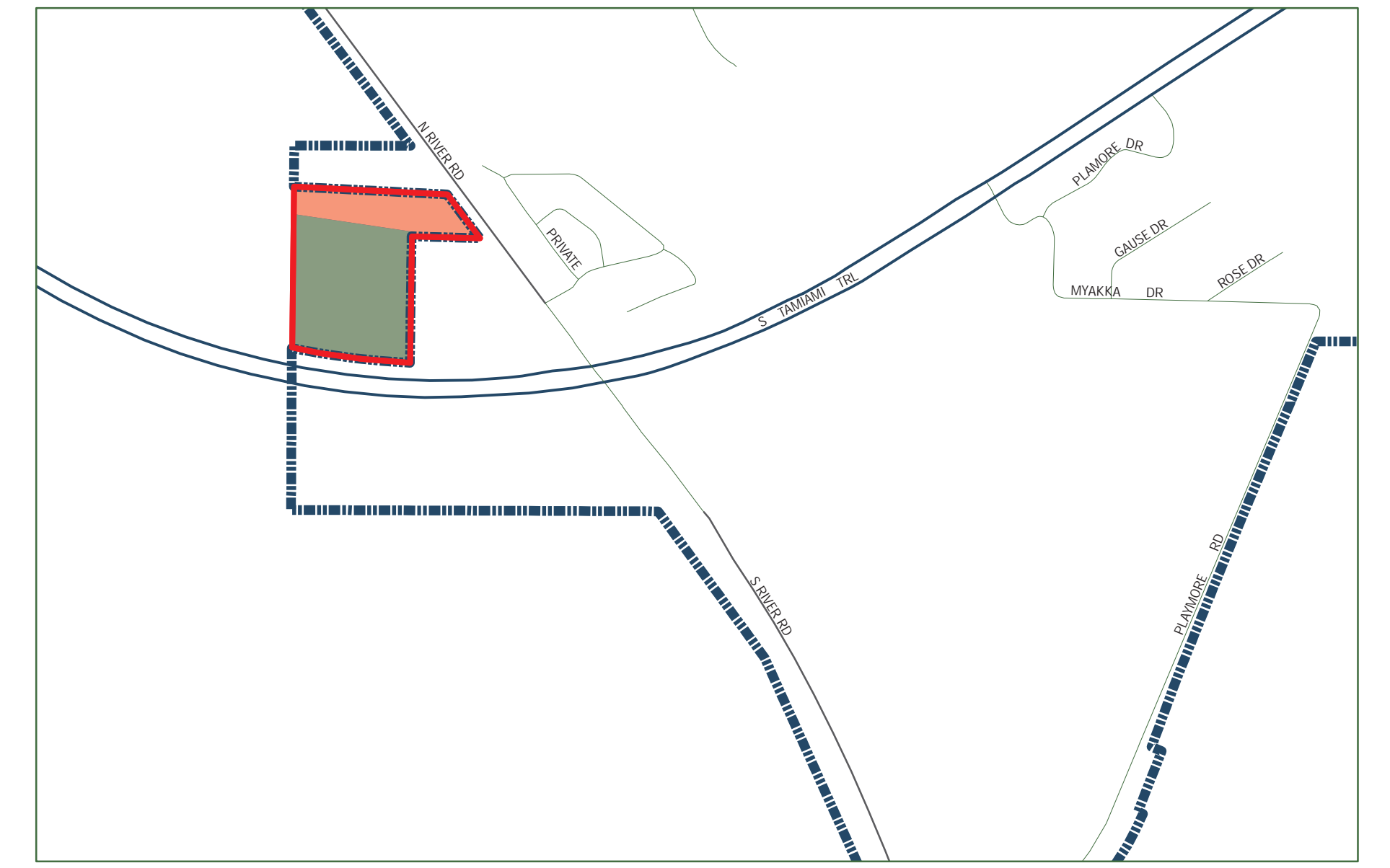
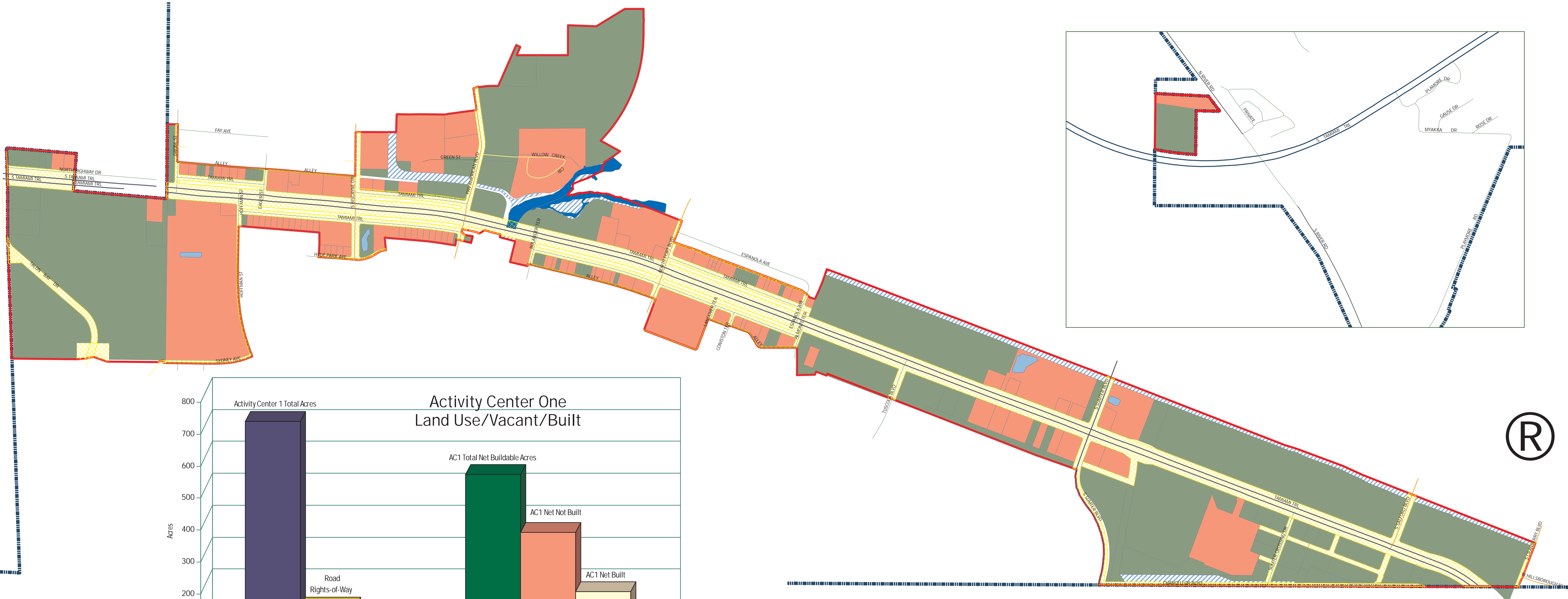


# Activity Center One Development

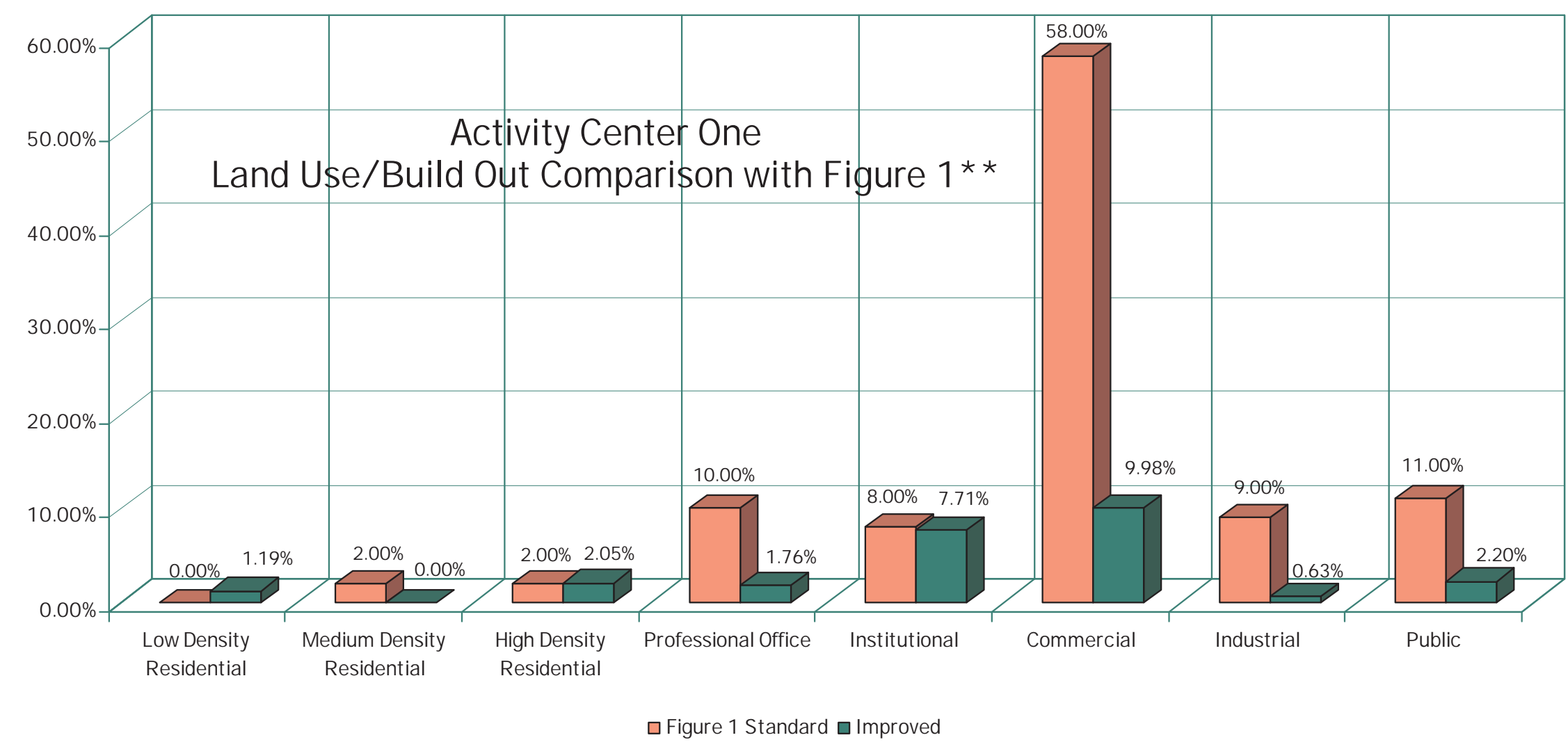
## EXHIBIT A



(Information Based on Sarasota County's 2006 Property Appraiser Data.)

**Legend**

- North Port City Limits
- AC1 Parcels
- AC1 Roads**
  - ARTERIAL
  - COLLECTOR
  - LOCAL
  - PRIVATE
- AC1 Water Features**
  - Mykkahatchee Creek
  - Ponds
  - AC1 Boundary
  - AC1 Road Rights-of-Way
  - AC1 Drainage Rights-of-Way
  - AC1 Built
  - AC1 Not Built



\*Institutional Based on current Institutional built and separated from Figure 1 Office Professional/Institutional for analysis purposes only.  
 \*\*Figure 1: Standards for Mixture of Uses in Activity Centers, Future Land Use Element - City of North Port Comprehensive Plan.



Prepared by:  
 City of North Port, Florida  
 Planning and Zoning Department  
 and GIS Division  
 July 2007

Disclaimer: This map is for reference purposes only and is not to be construed as a legal document. Any reliance on the information contained herein is at the user's risk. The City of North Port and its agents assume no responsibility for any use of the information contained herein or any loss resulting there from.